

IVRCL CORPORATE PRESENTATION



IVRCL OVERVIEW



Vision

- Meeting ever growing and challenging requirements in today's competitive world through strong quality systems
- Creating a dedicated and confident workforce through continual development
- Adding value to the investors

Mission

- To be a leading player in infrastructure development by providing total solutions

Quality Policy

- Commitment to customer satisfaction, quality awareness, desire for excellence and continual improvement is our motto.

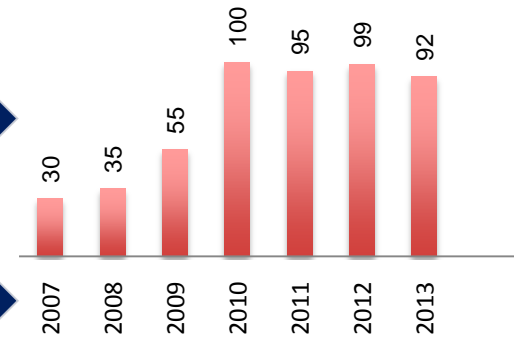
HSE

- IVRCL has put in place stringent policies to create a safe and healthy environment at the project sites. The Company's policy for Health, Safety & Environment has been consistent towards achieving a ZERO Loss Time Injury.

IVRCL - ONE OF THE FEW CONSTRUCTION COMPANIES IN INDIA HAVING IMS CERTIFICATION

Safe Man Hours (In-Million)

■ Safe Man Hours (In-Million)



STATISTICS

Appreciation Certificates



QUALITY ASSURED COMPANY ISO 9001:2008



ENVIRONMENTAL MANAGEMENT SYSTEM ISO 14001:2004



SAFETY ASSURED COMPANY OHSAS 18001:2007

Outline



Premier Infrastructure company - EPC & LSTK Service Provider with front-end engineering capabilities

Water, Transportation, Buildings & Industrial Structures Mining, and Power sector;

Listed in 1995 in NSE & BSE

Provides End to End solutions in complete value chain of water industry

Proven Project Execution Skills and presence across 26 states in India and Overseas

Strong Pre-qualifications and well established brand image

Highly qualified and well trained human resource base

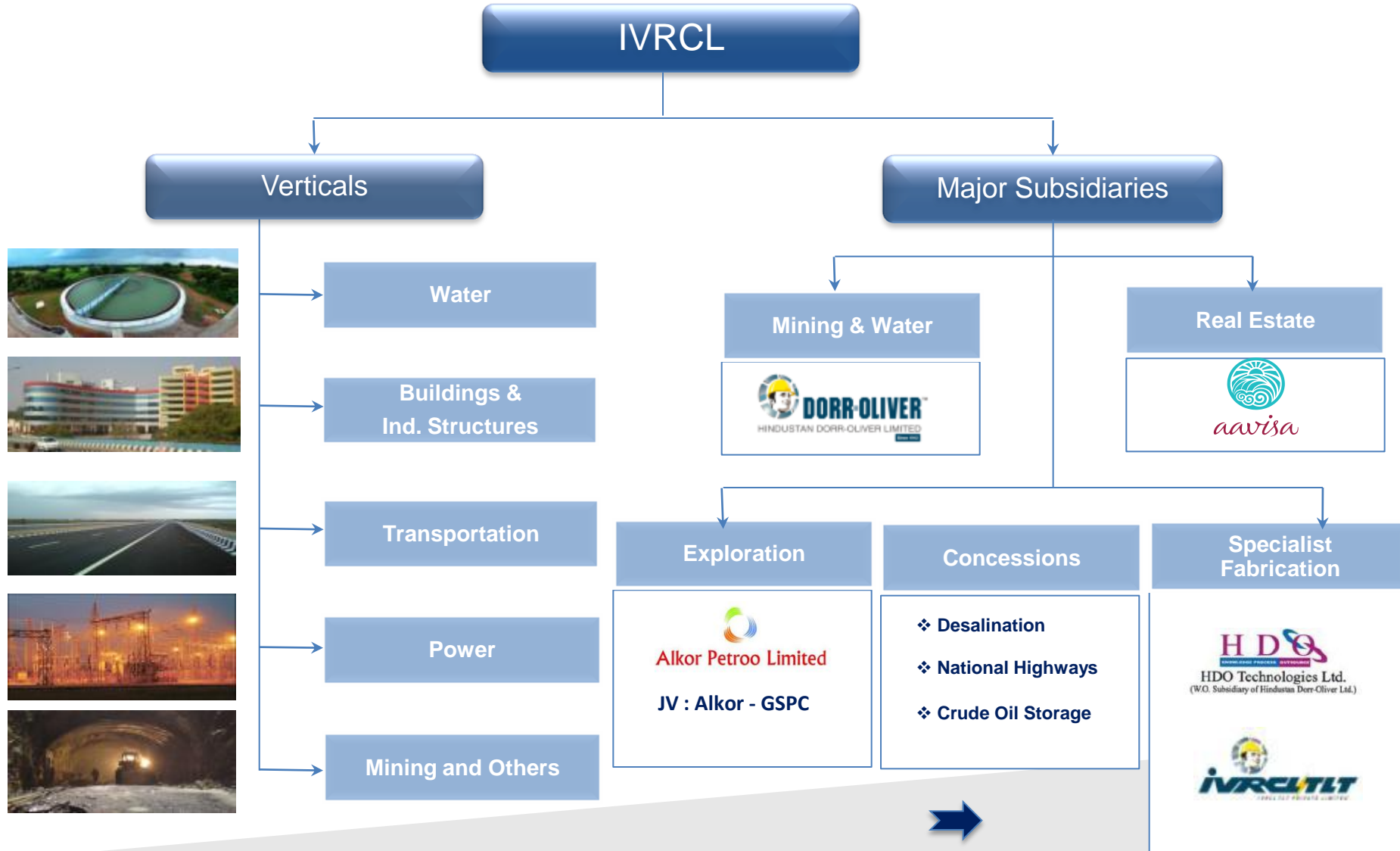
Own construction equipment -Rs. 800 crores

Concessions – Qualified to bid

Order Book around **Rs 20,000 Cr**






Pan- India presence



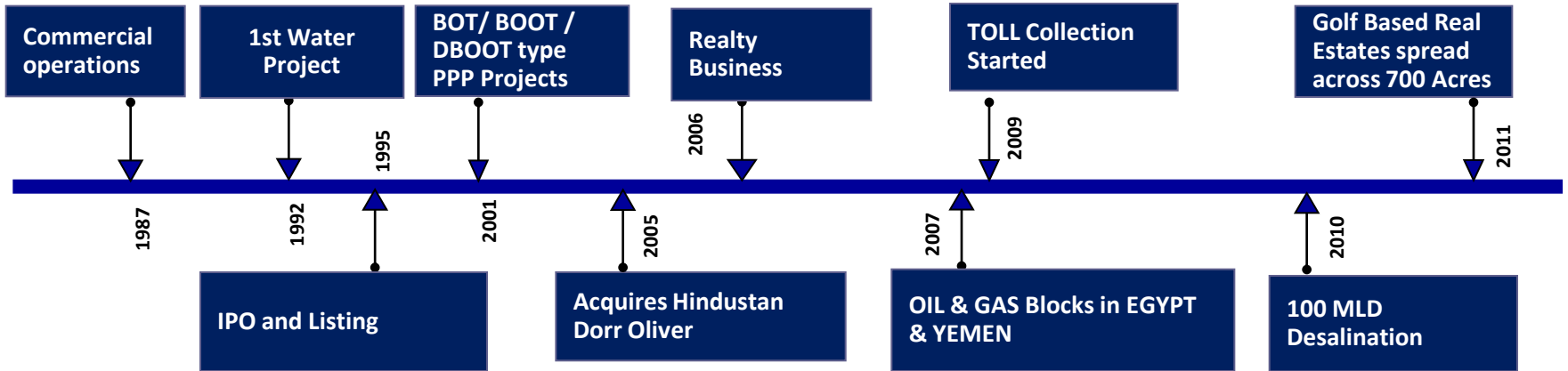


BUSINESS VERTICALS



Water	Transportation	Buildings & Industrial Structures	Power	Mining & Others
<ul style="list-style-type: none"> ▪ Irrigation ▪ Drinking water ▪ Desalination ▪ Environmental Projects ▪ Industrial Water Solutions ▪ Hydro Power Projects 	<ul style="list-style-type: none"> ▪ Highways ▪ Bridges ▪ Railways ▪ Tunnels ▪ Metros 	<ul style="list-style-type: none"> ▪ Residential ▪ Commercial ▪ Industrial ▪ Institutional ▪ Healthcare ▪ SEZ 	<ul style="list-style-type: none"> ▪ Transmission Lines ▪ Rural Electrification ▪ High Voltage Direct Current ▪ Distribution ▪ Sub Stations ▪ Railway Traction ▪ Owned Manufacturing Tower Factory 	<ul style="list-style-type: none"> ▪ Overburden Removal ▪ Underground Mining ▪ Shaft Sinking ▪ Oil Storage Infrastructure ▪ Bulk Oil Transmission Networks
				

Milestones - Its History



A Leading Water infrastructure company in India

Eminent Pre - Qualifications



WATER

Pipe Line Installation	: 25000Kms
Canals	: 2300Kms
WTP	: 1300 MLD (Largest 160)
Pumping	: 24,25,000 Cum./Hr
Total Capacity of the Pumps	: 476.8 MW
Vertical Turbine	: 298 Nos
HSC Pumps	: 606 Nos
Tunnels	: ~ 102 KM (4 to 18 M Dia)
Desalination	: 100 MLD (Largest of it's kind)

TRANSPORTATION

Highways	: 3402 Lane Kms
Tunneling	: 2 Kms
Railways Track Works	: 75 Kms
Bridges	: 20 Kms
Single largest bridge	: 2.62 Kms
Highway Concession Projects under Operation and Development	: 1963 Lane Kms

BUILDINGS

Total Building area undertaken	: 51.60 Million Sft.
Concrete	: 1.80 Million Cum.
Structural Steel	: 30600 MT
Tallest Building	: 20 Floors
Piling:	3.43 Lac Mtrs. (500mm to 1600mm dia)



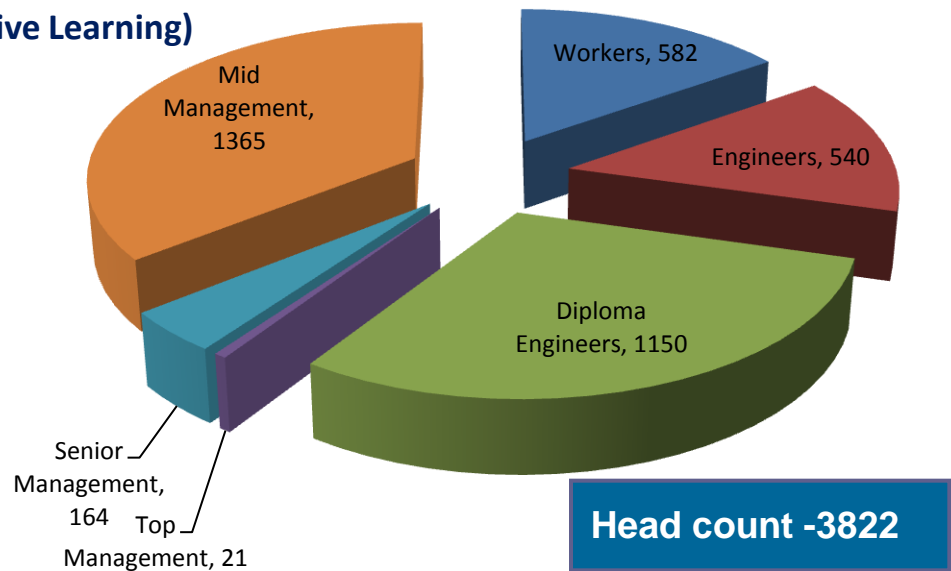
POWER

BPL Connections	: 7 Lakhs
Villages Electrified	: 11000 Nos
Transmission Line Undertaken (132, 220, 400 & 765 KV)	: 1460 Kms.
Traction & OHE works	: 60 Track Kms.

HUMAN RESOURCES



- ❖ Management team with deep industry experience
- ❖ Human resource development by :
 - ❖ Quality intake / recruitment
 - ❖ Training & skill up-grading
 - ❖ Dedicated Training Center (Center For Creative Learning)
 - ❖ External Experts to Train
 - ❖ Finance to Non Finance
 - ❖ Technical to Non-Technical
 - ❖ Health, safety & quality management



BUSINESS VERTICALS



WATER



IVRCL is Enhancing the Elixir of Life

Water, an overview

Business

- Water Projects
 - Transmission Mains, Distribution Systems, Pumping & Re-circulation Systems, O&M, Irrigation Dam and Canal Works
- Environmental Projects
 - Sewage systems, Water/Sewage treatment plants, Solid waste recycling plants
- Irrigation Projects
 - Canal Lining, Irrigation Drip & Lift , Dams etc.

Key Projects:

Completed :

- Chennai Water Desalination Plant at Tamilnadu
- Hogenakkal Water Supply Project at Tamilnadu
- Punasa Lift Irrigation Scheme at Madhya Pradesh
- HNSS Main Canal Stage II, Phase I at AP
- Kutch Water Supply Scheme at Gujarat

Ongoing :

- Water Supply Schemes PHED–Rajasthan- 8Pkg
- Yettinahole Project - Pkg-2,3,5 at Karnataka
- Bhandup Tunnel at Maharashtra
- Sripada Sagar Lift Irrigation Scheme at AP
- Tansa Transmission Main Pipeline at Maharashtra
- Jalore water supply scheme at Rajasthan

Key Projects



100 MLD Chennai Desalination Plant for Chennai Metro Water Supply



Purander Lift Irrigation for Maharashtra Krishna Valley Development Corporation



NTPC Vindhyachal Project

Water Capabilities

- **Drinking Water Treatment including Heavy Metal Removal & Rural cum Multiple Urban Supply Schemes**
- **Water Distribution Systems – Pipelines, Pumping Stations & Storage Systems**
- **Irrigation Projects – Major & Medium including Lift & up to Drip Irrigation**
- **Desalination Projects**
- **Industrial Water Solutions**
 - **Water & Waste Water Treatment & Recycling Plants**
 - **Make-up Water Systems**
 - **Circulating water Systems**
 - **Water Carrier Systems**
 - **Liquid – Solid Separation**
 - **Demineralization Plants**
 - **Design, Engineering & Manufacture of Process Equipment**
 - **Effluent & Common Effluent Treatment Plants**
- **Sewage Treatment Plants**

Drinking Water Projects



**Chambal - Dholpur – Bharatpur
Water Supply Project, Rajasthan**



**Hogenakkal Water Supply and Fluorosis
Mitigation Project, Tamil Nadu**



Jalore Water Supply Scheme, Rajasthan



Tansa Transmission Main Pipeline, Maharashtra



Drinking water Treatment Plants

160 MLD Hogenakkal Project- Tamilnadu



112 MLD Chambal – Dholpur – Bharatpur Project - Rajasthan



71.77 MLD at Halol



33.24 MLD at Gadhada



31.87 MLD at Mahi



24.86 MLD at Vallibhipur

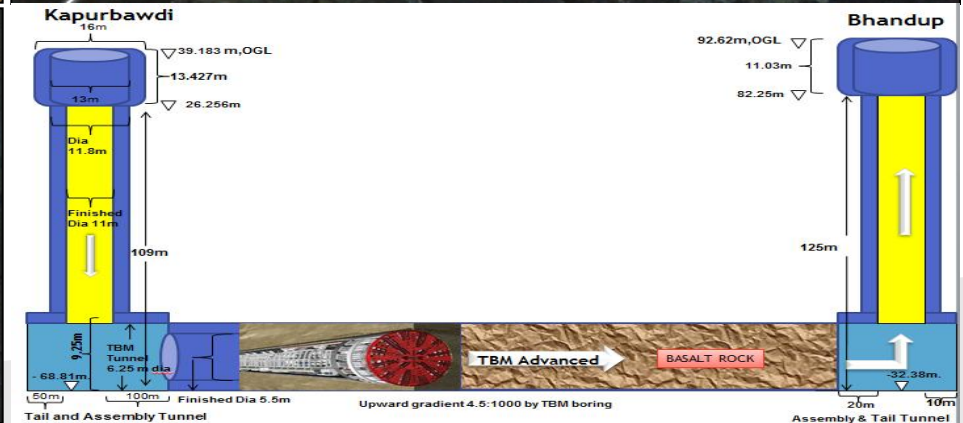


Water Tunnel Project, a record achievement



CONSTRUCTION OF ROCK TUNNEL USING MODERN FULL-FACE ROCK TUNNEL BORING MACHINE (TBM), OWNED TBM INHOUSE.

IVRCL is very proud in delivering this project which involved bulk transport of water through the tunnel to Mumbai city. The Tunnel is constructed under the city without disturbing the city and with utmost care and safety, working at a depth of over 100 M below the ground level



Industrial Water Projects



Neyveli Lignite Corporation's Barsingsar Thermal Project (2X 125MW) – Water Carrier System



Sipat Thermal Power Project for NTPC – 3x660MW, Makeup Water Supply Package



Vindhyachal Super Thermal Power Project for NTPC- 2X500MW Water Pre-Treatment Plant



Irrigation Water Projects

Purandar Lift Irrigation Scheme, Maharashtra



Dehani Lift (Drip) Irrigation Scheme



Punasa Lift Irrigation Scheme



Sripada Sagar lift Irrigation Scheme



Sripada Sagar Lift Irrigation Project, Andhra Pradesh

Environmental Water Projects

ALANDUR – SEWAGE TREATMENT PLANT



SEWERS LINES IN BHUBANESWAR



RUIDP SEWAGE SCHEME IN RAJASTHAN STATE



ALLAHABAD STP



Desalination Plant

Project Name : 100 MLD Seawater Desalination Plant

Project Location : Kattupalli Village, Ponneri Taluk, Minjur

Owner :M/s Chennai Water Desalination Ltd (CWDL)

Client : Chennai Metropolitan Water Supply & Sewerage Board (CMWSSB)

Project Type: Design Build Own Operate & Transfer basis (DBOOT)

Operation & Maintenance Period: 25 years from the date of

Commercial Operations Date (COD)

Process : Seawater is desalinated by Reverse Osmosis process to get potable water as per IS 10500: 1991 & as specified in the Agreement BWPA between CMWSSB & CWDL.

Average Water Supply per day is 95 MLD



BUILDINGS & INDUSTRIAL STRUCTURES



Buildings and Industrial Structures, an overview



Business

- Building Projects including Integrated Townships, Composite Housing Projects, Commercial Buildings, Institutional & Technical Buildings, SEZ's / IT Parks and Industrial Construction
- Other Infrastructure projects include Storm water drains, underground drains, layout formation and overburden removal, Project Site Developments

■ Key Projects:

■ Completed:

- Seawoods Estate at Navi Mumbai for CIDCO
- Naya Raipur state Secretariat Bldg
- CIDCO Exhibition Centre Building
- Civil & Structural works at Bathinda for HMEIL
- IGCARL Research Bldg
- Bangalore Metro Stations 6 Stations for BMRCL

■ Ongoing

- Civil & Structural works of Main Plant NTPC
- DSIISD Bawana – EWS Housing
- General Hospital Campus, Valsad
- Old MLA Quarters, Hyderabad, Govt. AP R&B
- Academic & Residential Campus IIT-Bhubaneswar
- Institute Campus for NIT, Patna

Key Ongoing Projects



Hill Ridge- Games Village
Gachibowli, Hyderabad –1.5mn sft



BMRCL Metro Station



Guru Gobind Singh Refinery Project

Group Housing Projects



CHITRAPURI HOUSING SOCIETY



CIDCO-SEAWOODS ESTATES



AMBUJA HOUSING KOLKATA



BANAHALLI HOUSING COLONY, KARNATAKA



Commercial Projects



CHATTISGARH STATE SECRETARIAT



CIDCO EXHIBITION CENTRE



TRAFFIC & TRANSIT MANAGEMENT CENTRE FOR BMTc (BANGALORE)



BIHAR VIDHAN SABHA



Hospital Projects

VALSAD GENERAL HOSPITAL CAMPUS

GOA HOSPITAL



SANGAREDDY DISTRICT HOSPITAL

BIDAR MEDICAL COLLEGE



Institutional Projects

BITS PILANI CAMPUS AT HYDERABAD



ICFAI CAMPUS, HYDERABAD



IITM GWALIOR



PUNJAB TECHNICAL UNIVERSITY



Metro Projects

Name of works:-

- ❖ Construction of two elevated metro stations CMH road station and Byappanahalli Stations
- ❖ Construction of two elevated metro stations R V Road station and Jayanagar Stations
- ❖ Construction of two elevated metro stations Old Madras road station and Ulsoor Stations



Industrial Projects



GURU GOVIND SINGH REFINERY PROJECT



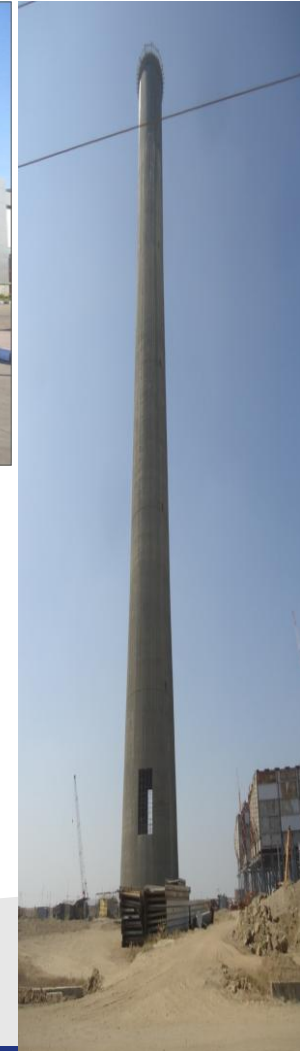
MAIN PLANT BUILDING, TATA CUMMINS



WIRE & BAR MILL PROJECT AT JSPL



TATA TELCON FACTORY, KHARAGPUR



RCC Chimney Shell (269 M) Solapur Super Thermal Power Project

Industrial Projects



EXTERNAL COAL HANDLING SYSTEM – MUNDRA, GUJARAT



COKE DRUM AREA FOR IOCL



COAL HANDLING PLANT FOR NTPC RIHAND STPP



NTPC SOLAPUR MAIN PLANT



POWER



Business

- Power Projects include Transmission Lines, High Voltage Direct Current, Distribution and Substations

Key Ongoing Projects:

765KV Transmission Line Tower Package

400 KV / 220 KV / 132 KV Transmission lines

220/120 KV Substation Projects

Rural Electrification Projects

Railway Traction Works

Key Ongoing Projects



Projects undertaken (Transmission Lines)



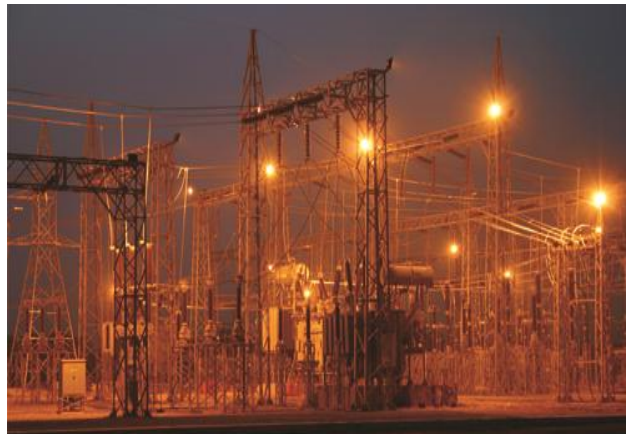
765 KV S/C SEONI-NANDANWADI

- Client: Power Grid Corporation of India Limited
- 765 KV S/C T/L from Seoni to Nandanwadi in Madhya Pradesh
- Length = 126 Kms.
- Total Towers = 342 Nos.

400 KV D/C MANESAR-NEEMRANA

- Power Grid Corporation of India Limited
- 400 KV D/C T/L from Manesar To Neemrana in Haryana & Rajasthan.
- Length = 67 Kms.
- Total Towers = 197 Nos.

Projects undertaken (SUB-STATION AND OTHER POWER PROJECTS)



220/120 K.V. SUBSTATION AT JIND FOR HARAYANA VIDYUT



400 KV DC TRANSMISSION LINE PROJECT FOR AP TRANSCO



2x500 MW HVDC PROJECT AT BHADRAWATI, MAHARASHTRA



RURAL ELECTRIFICATION



RAILWAY TRACTION

TRANSPORTATION



Transportation, an overview

Business

- National Highways/Expressways, State Highways, Integrated Toll Collection, Bridges, Tunnels, Railways & Metro Rail Projects

- Key Projects:

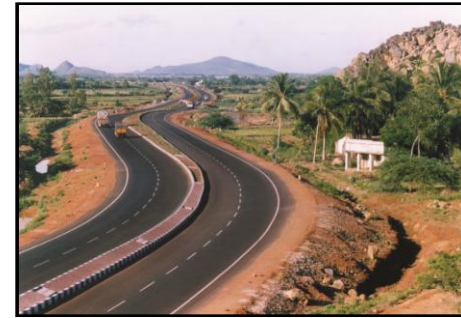
Completed:

- ❖ Indore–Jhabua–Gujarat/MP Border NH Project for NHAI
 - ❖ 4 Laning of Salem to Kumarapalayam & Kumarapalayam to Chengapalli NH Project
 - ❖ 4 Laning of Jalandhar to Amritsar NH Project in Punjab
 - ❖ 4 Laning of Madurai to Kanyakumari (NS40 & 41) NH Project in Tamilnadu
 - ❖ 4 Laning of Bhogpur – Mukerian for NHAI in state of Punjab

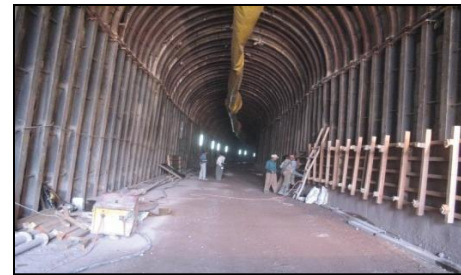
Ongoing:

- ❖ 6 Laning from Chengapalli to start of Coimbatore Bypass and 4 laning of end of Coimbatore to TN / Kerala Border
- ❖ Four Laning of Baramati - Phaltan Road SH10 & Phaltan - Lonand Shirwal

Road in Maharashtra



Srikakulam – Palasa NHAI



Tunnel Project for Konkan Railways



Solapur – Mohol B.G Railway Line

Key Projects

Projects undertaken (Highways)



4 LANING OF INDORE-JHABUA-GUJARAT/MP



MADURAI TO KANNIYAKUMARI NS – 40 & 41



KARANJI - WANI - GHUGGUS - CHANDRAPUR ROAD



BHOGPUR TO MUKERIAN SECTION



Projects undertaken (Railways, Bridges & Tunnels)

MOHAL – SHOLAPUR RAILWAY PROJECT



J&K RAILWAY TUNNEL



MAJOR INTERCHANGE AT CHENNAI



ROB AT PERAMBUR, CHENNAI



MINING



Malanjkhand Open cast mining



Transportation of Coal from Ananta OCP



Over Burden removal for Singareni Collieries



Removal of OB for Rajmahal Area



PPP PROJECTS (CONCESSIONS...)



Salem to Kumarpalyam on NH-47 in the State of Tamilnadu on BOT- Basis (TN-06)



CLIENT

National Highways Authority of India

PROJECT

Design, Construction, Development, Finance,
Operation and Maintenance of Km.203.96 on NH-7
(km.0.00) (Salem) to Km.53.00 (Kumarpalyam) on
NH-47 in the State of Tamilnadu on (BOT) Basis.

FEATURES

4 Lane National Highway Road Project

Length = 53.525 Kms.

Toll Collection per day = INR 11.75 Lakhs

Kumarpalayam to (after Chengapalli) on NH-47 in the State of Tamilnadu on BOT- Basis (TN-07).



CLIENT

National Highways Authority of India

PROJECT

**Design, Construction, Development, Finance,
Operation and Maintenance of Km.53.00**

**(Kumarpalayam) to Km.100.00 (after Chengapalli) on
NH-47 in the State of Tamilnadu on (BOT) Basis**

FEATURES

46.10 Kms. 4 Lane National Highway Road Project

Length = 48.510 Kms.

VALUE

Toll Collection per day = INR 12.50 Lakhs

Jalandhar - Amritsar section) in State of Punjab on (BOT) Basis.



CLIENT

National Highways Authority of India

PROJECT

Improvement, Operation and Maintenance including Strengthening and widening of existing 2-lane road for 4-lane dual carriageway from km.407.100 to km.456.100 of NH-1 (Jalandhar - Amritsar section) in State of Punjab on (BOT) Basis.

FEATURES

4 Lane National Highway Road Project

Length = 49.000 Kms.

VALUE

Toll Collection per day = INR 9.25 Lakhs

Desalination Plant

Project Name : 100 MLD Seawater Desalination Plant
Project Location : Kattupalli Village, Ponneri Taluk, Minjur
Owner :M/s Chennai Water Desalination Ltd (CWDL)
Client : Chennai Metropolitan Water Supply & Sewerage Board (CMWSSB)

Project Type: Design Build Own Operate & Transfer basis (DBOOT)

Operation & Maintenance Period:

25 years from the date of Commercial Operations Date (COD)

Process : Seawater is desalinated by Reverse Osmosis process to get

potable water as per IS 10500: 1991 & as specified in the

Agreement BWPA between CMWSSB & CWDL.

Average Water Supply per day is 95 MLD

Revenue collection per Month is INR 140 Millions



CRUDE OIL AND FINISHED PRODUCT STORAGE AND HANDLING FACILITIES AT PARADIP



Project Description :

Indian Oil Corporation Limited (IOCL) is setting up a 15 MMTPA grass root refinery at Paradip in the state of Orissa near Paradip Port, IOCL for meeting storage and handling requirements, proposed to install crude oil and finished product storage and handling facilities in the refinery complex on Built-Own-Operate and Transfer (BOOT) basis.



Client : Indian Oil Corporation (IOCL)

Consortium : IOT Infrastructure & Energy Services Limited, Oil tanking GmbH (“OT”), Germany & IVRCL Infrastructures & Projects Limited

SPV : IOT Utkal Energy Services Ltd. (IOTUL)

EPC : ITOUL will be entering into fixed-cost EPC contracts with IVRCL for civil related portion of the project.



Operation Period : 15 Years from the beginning of Commercial Operations Date (COD).

PROJECTS - OVERSEAS



Highlights

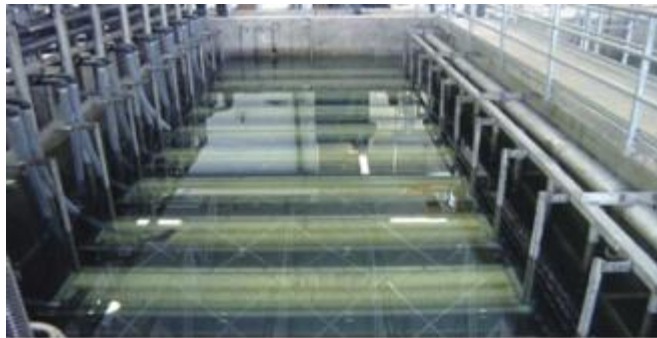
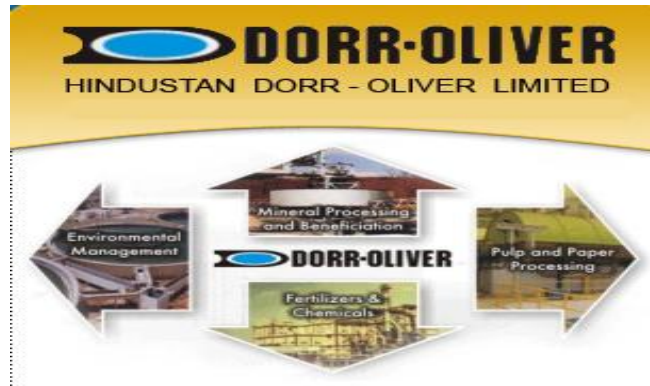
- **Bura Irrigation and Settlement Scheme Rehabilitation Project at Kenya**
- **Construction of 4100 Housing units (under Phase – I of 15,000 units) for relocation of underserved settlements in Colombo, Sri Lanka**
- **Construction of Main Civil Works for Rahughat Hydroelectric Project in Nepal**



MAJOR SUBSIDIARIES



Hindustan Dorr-Oliver (HDO)



HDO Overview

- HDO was acquired by IVRCL LIMITED in 2005, currently operates as a majority-owned subsidiary of the IVRCL group
- HDO is a diversified engineering company providing customized turnkey solutions, technology and EPC installations
- Major business verticals:
 - ➔ Manufacturing of Engineering equipment
 - ➔ Engineering EPC
 - ➔ Design and Engineering
- Major clients include UCIL*, Vedanta Group, IOCL , HMEL* , IFFCO* , RCF* , GAPINSAT (Turkey)

UCIL - Uranium Corporation of India

HMEL – HPCL Mittal Energy Ltd.

IFFCO - Indian Farmers Fertiliser Cooperative Ltd.

RCF – Rashtriya Chemical Fertilizers Ltd.



- Conventional Thickeners
- Hi-Rate Thickeners
- Super Thickeners
- Clarifiers
- Belt / Pan Filters
- Kelly Filters
- Red Mud Filters
- Drum Filters
- Disc Filters
- Autoclaves
- Screw Classifiers
- Flotation Cells

Mineral
Beneficiation



- Clarifiers
- Thickeners
- Digesters
- Detritors
- Trickling Filter Distributor
- Clariflocculator
- Pretreater
- Surface Aerators
- Monorake
- Multimedia Filters
- Completreator

Environment



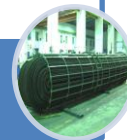
- Pulper
- Aqua Separator
- DSM Screens
- Continuous Digester
- Brown Stock Washer
- Bleach Washer
- Shredder Repulper
- Reausticizing System
- Classifiers
- Clarifiers

Pulp and Paper



- Heat Exchangers – all types
- Pressure Vessels
- Tank Spheres
- Reactors
- Columns
- Storage Tanks
- Desalters
- Indirect Fired Heaters
- Air Cooled Condensers
- Evaporators

Hydro-Carbon
Sector



- Granulator
- Pulverizer
- Dryers
- Coolers
- Scrubbers

- Rapidorr Clarifier
- OC Filter
- Brine Clarifiers and Filters
- Jet and Mono Sizer

Chemicals &
Fertilizers /
Others



Transmission Line Tower Factory, Nagpur



- ◆ Area: 23 acres (93281 Sq.m)
- ◆ Installed capacity : 36000 MT / per annum
- ◆ Salient features:
 - ◆ With State-of-art infrastructure.
 - ◆ Mix & match type having CNC & manual machines.
 - ◆ Galvanising Bath (75m x 1m x 2m)
 - ◆ Combines highly skilled manpower deployment with modern manufacturing infrastructure to ensure products of highest quality.
 - ◆ An environment / pollution free plant
- ◆ Production planned for current fiscal : 24000 MT



Our Product Range :

- ◆ Transmission line towers (66kV to 765 kV)
- ◆ Substation Structures (Lattice & Pipe)
- ◆ Structural steel for Rural electrification
- ◆ Micro wave towers
- ◆ Structural steel for AC Traction (OHE)



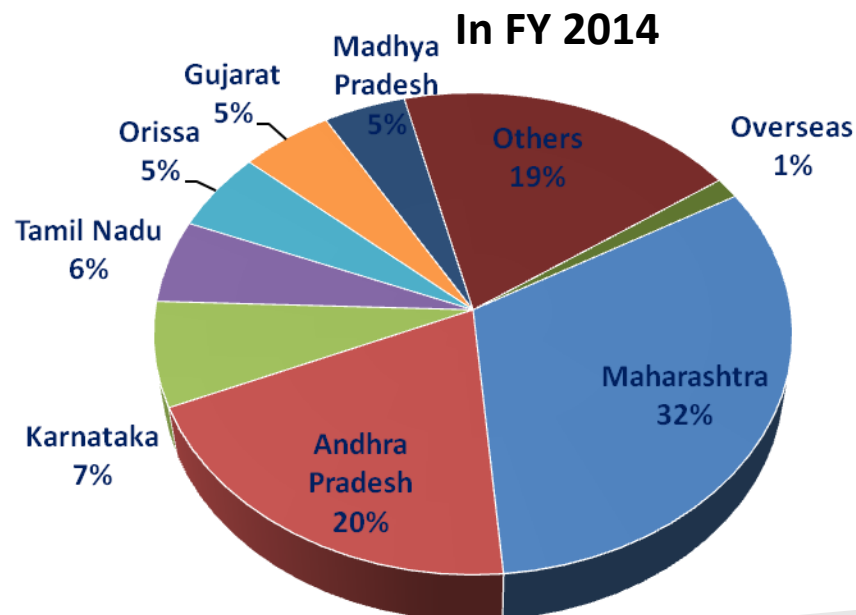
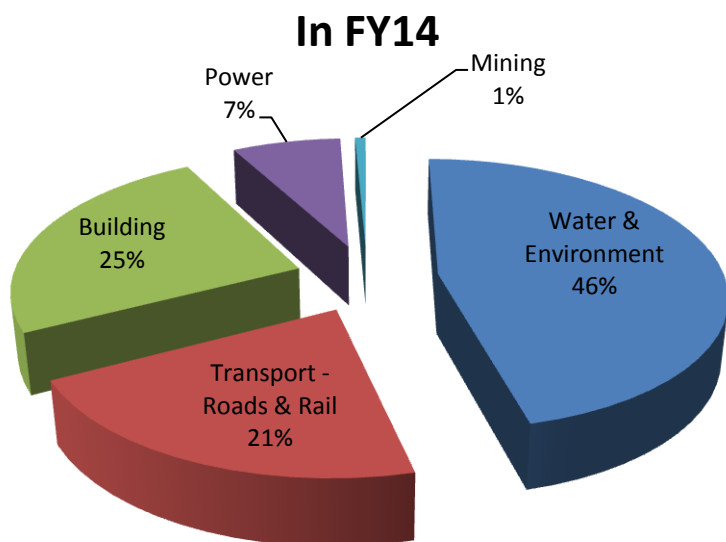
FINANCIAL SNAPSHOT



PERFORMANCE AT A GLANCE

(` in Crores)

Particulars	2009-10	2010-11	2011-12 (15M)	2012-13 (9M)	2013-14
Turnover	5494	5659	6178	3759	4305



52% of FY 2014 Revenues have come from A.P and Maharashtra in FY 2014

THANK YOU

IVRCL LIMITED
'MIHIR', H. No. 8-2-350/5/A/24/1B
Panchavati Colony,
Road No. 2, Banjara Hills,
Hyderabad -500 034.
Andhra Pradesh, India
Tel: +91-40-3093 1111/1444
Fax: +91-40-2335 6693
info@ivrinfra.com



Infrastructure & EPC Business

"IVRCL - India's choice for a Partner"